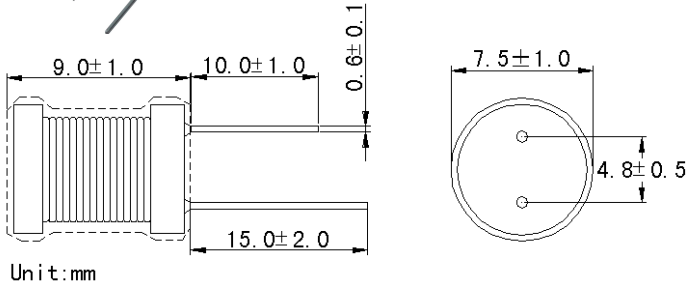


Radial Type Choke Inductors CD2W0707 Series



CD2W0707 Series ,Contain high-frequency ferrite. Comparatively large rated current. Power supplies,DC-DC converters. TVs,VTRs,computers. Computer Peripherals. Telephones,Air-Conditions. Home Electric Appliance. Electronic toys and games.



Unit:mm

P/N	L (uH)	Q (min)	DCR(mohm) MAX	Isat (A)
CD2W0707-1R0M	1.0	90	14.0	5.980
CD2W0707-1R5M	1.5	90	17.0	4.850
CD2W0707-2R2M	2.2	90	17.0	3.560
CD2W0707-3R3M	3.3	90	21.0	2.970
CD2W0707-4R7M	4.7	90	30.0	2.340
CD2W0707-6R8M	6.8	90	54.0	1.980
CD2W0707-100K	10	85	84.0	1.980
CD2W0707-120K	12	85	90.0	1.880
CD2W0707-150K	15	65	110.0	1.650
CD2W0707-180K	18	65	120.0	1.550
CD2W0707-220K	22	65	130.0	1.413
CD2W0707-270K	27	50	140.0	1.278
CD2W0707-330K	33	50	150.0	1.161
CD2W0707-390K	39	50	160.0	1.062
CD2W0707-470K	47	50	220.0	0.972
CD2W0707-560K	56	50	250.0	0.891
CD2W0707-680K	68	40	310.0	0.810
CD2W0707-820K	82	40	340.0	0.729
CD2W0707-101K	100	40	430.0	0.675
CD2W0707-121K	120	40	560.0	0.630
CD2W0707-151K	150	60	940.0	0.531
CD2W0707-181K	180	60	1020.0	0.504
CD2W0707-221K	220	60	1140.0	0.477
CD2W0707-271K	270	60	1290.0	0.432
CD2W0707-331K	330	70	2040.0	0.387
CD2W0707-391K	390	70	2240.0	0.360
CD2W0707-471K	470	70	2510.0	0.333
CD2W0707-561K	560	55	2830.0	0.306
CD2W0707-681K	680	55	3080.0	0.279
CD2W0707-821K	820	55	3410.0	0.261
CD2W0707-102K	1000	75	3900.0	0.189
CD2W0707-122K	1200	75	4420.0	0.180
CD2W0707-152K	1500	75	5110.0	0.162
CD2W0707-182K	1800	75	5810.0	0.144
CD2W0707-222K	2200	75	8380.0	0.135
CD2W0707-272K	2700	75	9590.0	0.126
CD2W0707-332K	3300	75	11040.0	0.117
CD2W0707-392K	3900	75	12500.0	0.108
CD2W0707-472K	4700	75	14300.0	0.099
CD2W0707-562K	5600	70	16000.0	0.090
CD2W0707-682K	6800	70	20900.0	0.081
CD2W0707-822K	8200	70	29200.0	0.072
CD2W0707-103K	10000	70	33400.0	0.063
CD2W0707-123K	12000	70	43100.0	0.054
CD2W0707-153K	15000	70	50500.0	0.054
CD2W0707-183K	18000	70	69100.0	0.045
CD2W0707-223K	22000	70	80600.0	0.036
CD2W0707-273K	27000	70	94200.0	0.027
CD2W0707-333K	33000	70	139000.0	0.018
CD2W0707-393K	39000	70	155600.0	0.018
CD2W0707-473K	47000	70	176600.0	0.018

1. Inductance tested at 2.52MHz,0.1V;
2. SRF>13MHz measured using Agilent / HP8753D network Analyzer;
3. Inductance drop = 10% typ. at rated Isat;
4. ΔT=40°C rise typ. at Irms;
5. Operating temperature range -20°C to +105°C;
6. Electrical specifications at +25°C;

In Bulk Packing

Special inquiries besides the above common used types can be met on your requirement.

<http://www.Wtjg'g'Wta>
Sales@Wtjg'g'Wta