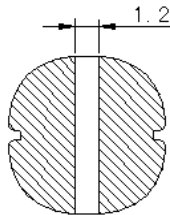
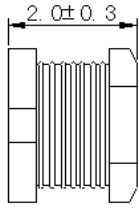
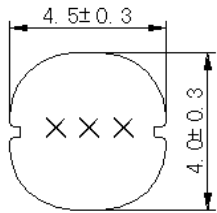


SMD Power Inductors CD42 Series

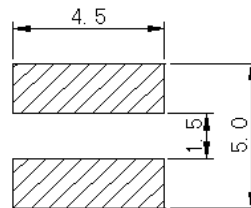


CD42 Series ,Various high power inductors are superior to be high saturation for surface mounting.

Mainly used by power supply for VRT,OA equipment
Digital camera,LCD television set notebook PC,partable communication equipments,DC/DC converters, etc.



Land Pattern



Unit:mm

| P/N | L (uH) ±20% | DCR(mohm) Max | Isat (A) |
|-----------|----------------|------------------|-------------|
| CD42-1R0M | 1.0 | 30 | 2.50 |
| CD42-1R5M | 1.5 | 40 | 2.30 |
| CD42-1R8M | 1.8 | 52 | 2.00 |
| CD42-2R2M | 2.2 | 60 | 1.80 |
| CD42-3R3M | 3.3 | 80 | 1.50 |
| CD42-4R7M | 4.7 | 106 | 1.20 |
| CD42-6R8M | 6.8 | 135 | 1.00 |
| CD42-100M | 10 | 195 | 0.80 |
| CD42-150M | 15 | 330 | 0.70 |
| CD42-220M | 22 | 486 | 0.60 |
| CD42-330M | 33 | 640 | 0.55 |
| CD42-390M | 39 | 700 | 0.50 |
| CD42-470M | 47 | 950 | 0.40 |
| CD42-680M | 68 | 1350 | 0.30 |
| CD42-101M | 100 | 1710 | 0.25 |
| CD42-151M | 150 | 2530 | 0.24 |
| CD42-221M | 220 | 4200 | 0.23 |
| CD42-331M | 330 | 5300 | 0.20 |
| CD42-391M | 390 | 6820 | 0.18 |
| CD42-471M | 470 | 7780 | 0.15 |

1. Inductance tested at 100KHz,0.1V;
2. SRF>13MHz measured using Agilent / HP8753D network Analyzer;
3. Inductance drop = 10% typ. at rated Isat;
4. ΔT=40°C rise typ. at Irms;
5. Operating temperature range -40°C to +125°C;
6. Electrical specifications at +25°C;

Packing :
Reel size: 12 mm
Quantity: 2000 PCS/Reel

Special inquiries besides the above common used types can be met on your requirement.

<http://www.coilsjs.com>
Sales@coilsjs.com